

# PATIENT HANDLING SOLUTIONS



**GRAHAM-FIELD** offers specialized Hausted® patient handling solutions throughout the hospital, outpatient centers, and anywhere streamlined patient transport and positioning is required.



**P**atient transport and positioning are critical components in treatment, recovery, and satisfaction of patients. At Graham-Field, we are constantly evolving our products and processes to provide our customers with the highest quality of service - before and after the purchase.

**P**atient and staff safety are paramount at Hausted. The demands placed on your healthcare professionals are higher than ever - we understand these challenges. That is why we incorporate critical safety features that protect your patients and staff every day.



### Features include:

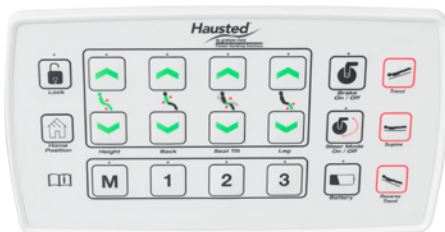
- 3-position side rails allow optimum patient access without compromising safety
- Brake and Steer pedals positioned to prevent awkward body movements
- Center Track Steering for superb mobility and turning ease
- Range of weight capacities, up to 800 lb (363 kg) on select models, and patient surface widths to accommodate bariatric patients

**O**ur commitment is to exceed your expectations in delivering an effective care environment, and desired outcomes. We are available at +1 770-368-4700 to answer any questions or provide technical support so your satisfaction stays high after many years of use as it was on day one.





**D**edicated and focused U.S. based research, engineering, testing, compliance, and process control ensures reliable solutions for our customers and their patients.



All Hausted® Stretchers and Chairs are manufactured in our U.S. ISO 13485 / MDSAP certified facilities, compliant with U.S. FDA Good Manufacturing Practices, and are CE marked.



## TABLE OF CONTENTS

### STRETCHERS

|  |           |
|--|-----------|
| <b>578 5E82 Series</b><br>Powered and Hydraulic Mobile Surgi-Stretcher | <b>4</b>  |
| <b>462 Series</b><br>Airglide™ Rail Horizon® Hydraulic Stretcher       | <b>6</b>  |
| <b>462 Series</b><br>Retracto™ Rail Horizon® Hydraulic Stretcher       | <b>7</b>  |
| <b>493RPCST</b><br>Fluoro-Track™ Fluoroscopy Stretcher                 | <b>8</b>  |
| <b>5B800</b><br>Bariatric Electric Surgi-Stretcher                     | <b>9</b>  |
| <b>4160D0ST</b><br>Pediatric Stretchers                                | <b>10</b> |
| <b>462EMPST</b><br>Youth Stretchers                                    | <b>11</b> |
| <b>Stretcher Accessories</b>   | <b>12</b> |
| <b>Stretcher Pad and Fabric Options</b>                                | <b>16</b> |

### STOOLS

|                                  |           |
|----------------------------------|-----------|
| <b>HSS500S</b><br>Surgeons Stool | <b>18</b> |
|----------------------------------|-----------|

### CHAIRS

|  |           |
|--|-----------|
| <b>ESC<sup>2</sup></b><br>Ophthalmology Platform | <b>19</b> |
| <b>APC</b><br>Hydraulic All Purpose Chair        | <b>20</b> |
| <b>EPC</b><br>Powered Procedure Chair            | <b>21</b> |
| <b>MBC000ST</b><br>Mammography / Biopsy Chair    | <b>22</b> |
| <b>VIC</b><br>Video Imaging Chair                | <b>23</b> |
| <b>Chair Accessories</b>                         | <b>24</b> |
| <b>Chair Fabric Options</b>                      | <b>26</b> |

## THE POWERED AND HYDRAULIC MOBILE SURGI-STRETCHER

series is a single surgical platform for eye, ENT, and Plastic surgery procedures. The low-profile head design allows excellent site access for superior and lateral procedures without compromising surgeon leg clearance.

- Articulating Headrest allows infinite and precise positioning of the head and neck
- Easy-to-use foot-end operated controls for height adjustment, backrest, leg section and Trendelenburg/Reverse Trendelenburg positioning
- Narrow width to facilitate steering and positioning during transport and surgery (refer to chart)
- Stainless Steel 3-Position Retracto™ Rails with Top Caps that eliminate patient transfer gap
- Emergency release for Quick Response positioning (powered models)
- Brake and Steer controls accessible at all four corners
- With optional Navigator SmartDrive System (powered models)
- Center Track Steering for superb mobility (nonpowered models)
- Smart Casters system lock and steer (powered models)
- Battery backup (powered models)
- Comfort Mattress Pad (optional upgrade - see page 16)

★ See Chart for Specifications

 578 Product Info

 5E82 Product Info



5E82




**Models: 578EYEST 578EYXST 5E82EYEST 5E82EYXST**

|                               | standard width |                 | wide width |                 | standard width |                 | wide width |                 |
|-------------------------------|----------------|-----------------|------------|-----------------|----------------|-----------------|------------|-----------------|
|                               | inch           | cm <sup>†</sup> | inch       | cm <sup>†</sup> | inch           | cm <sup>†</sup> | inch       | cm <sup>†</sup> |
| Overall Width:                | 29.75          | 75.57           | 34.50      | 87.63           | 32.00          | 81.28           | 37.00      | 93.98           |
| Overall Length:               | 88.50          | 224.79          | 88.50      | 224.79          | 92.34          | 234.54          | 92.34      | 234.54          |
| Overall Height:               | 24.00          | 60.96           | 24.00      | 60.96           | 22.00          | 55.88           | 22.00      | 55.88           |
| Overall Height:               | 32.00          | 81.28           | 32.00      | 81.28           | 40.00          | 101.60          | 40.00      | 101.60          |
| Patient Surface:              | 25.00          | 63.50           | 30.00      | 76.20           | 25.00          | 63.50           | 30.00      | 76.20           |
| Patient Surface:              | 81.50          | 207.01          | 81.50      | 207.01          | 85.38          | 216.87          | 85.38      | 216.87          |
| Side Rail Length:             | 49.00          | 124.46          | 49.00      | 124.46          | 49.00          | 124.46          | 49.00      | 124.46          |
| Side Rail Height:             | 14.00          | 35.56           | 14.00      | 35.56           | 14.00          | 35.56           | 14.00      | 35.56           |
| Mattress Pad:                 | 3.00           | 7.62            | 3.00       | 7.62            | 3.00           | 7.62            | 3.00       | 8.762           |
| Caster Diameter:              | 8.00           | 20.32           | 8.00       | 20.32           | 5.90           | 14.99           | 5.90       | 14.99           |
| Rail Type:                    | Retracto®      |                 | Retracto®  |                 | Retracto®      |                 | Retracto®  |                 |
| Caster Type:                  | easy roll      |                 | easy roll  |                 | Tente®         |                 | Tente®     |                 |
| Back/Legrest:                 | manual         |                 | manual     |                 | hydraulic      |                 | hydraulic  |                 |
| Backrest:                     | 0 - 90         |                 | 0 - 90     |                 | 0 - 85         |                 | 0 - 85     |                 |
| Knee Flex:                    | 0 - 75         |                 | 0 - 75     |                 | 0 - 60         |                 | 0 - 60     |                 |
| Trendelenburg:                | 16             |                 | 16         |                 | 15             |                 | 15         |                 |
| Trendelenburg:                | 16             |                 | 16         |                 | 15             |                 | 15         |                 |
| Volts (V)                     | —              |                 | —          |                 | 100 - 240      |                 | 100 - 240  |                 |
| Hertz (Hz)                    | —              |                 | —          |                 | ~ 50/60        |                 | ~ 50/60    |                 |
| Weight Capacity: <sup>1</sup> | 500            | 226.80          | 500        | 226.80          | 800            | 362.87          | 800        | 362.87          |
| Shipping Weight: <sup>8</sup> | 410            | 185.97          | 450        | 204.12          | 420            | 190.51          | 460        | 208.65          |

— Not Applicable/Available

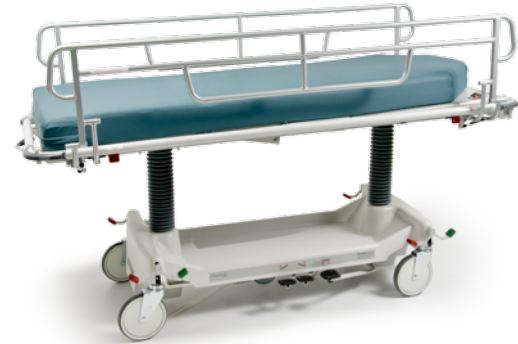
**462 SERIES AIRGLIDE™ RAIL HORIZON® HYDRAULIC STRETCHER**

The AirGlide Stretcher has powder-coated rails and a clear Ion Technology sealer coat for easy cleaning and ideal transport, treatment and recovery functions.

- 800 lb (362.87 kg) Weight Capacity —EVENLY DISTRIBUTED<sup>1</sup> (refer to chart)
- Full-length Pneumatic Assist side rails are higher and longer for enhanced patient safety
- Open base design provides ample storage space to hold oxygen tanks and patient belongings
- Dual side foot controls for easy height adjustment and Trendelenburg positioning
- Brake and Steer Controls accessible from all four corners
- Center Track Steering for superb mobility
- Comfort Mattress Pad (optional upgrade - see page 16)

★ See Chart for Specifications

 462 AirGlide™ Product Info



## 462 SERIES RETRACTO™ RAIL HORIZON® HYDRAULIC STRETCHER

The Horizon Hydraulic Retracto™ Rail Stretcher provides long-lasting and consistent performance during transport in any hospital, surgical, or outpatient environment.

- 800 lb (362.37 kg) Weight Capacity –EVENLY DISTRIBUTED<sup>1</sup> (refer to chart)
- Pneumatic Assist Backrest adjusts 0° - 90° for easy patient positioning and enhanced staff safety
- Dual Side foot controls for easy height adjustment and Trendelenburg positioning
- Standard and Wide Widths to accommodate most patients comfortably
- Center Track Steering for superb mobility
- Brake and Steer Controls accessible from all four corners
- Optional Knee Flex feature for enhanced patient comfort (refer to chart)
- Stainless Steel 3-position Retracto™ rails offer maximum patient access
- Comfort Mattress Pad (optional upgrade - see page 16)

★ See Chart for Specifications

 462 Retracto™ Product Info



### 462xxxST all models

|                            | inch  | cm†    |
|----------------------------|-------|--------|
| Overall Length:            | 83.00 | 210.82 |
| Overall Height:<br>maximum | 34.75 | 88.27  |
| Side Rail Height:          | 15.00 | 38.10  |
| Mattress Pad:<br>thickness | 4.00  | 10.16  |
| Caster Diameter:           | 8.00  | 20.32  |

|  | features               |
|--|------------------------|
| Casters Type:                          | Tente®                 |
| IV Wells:                              | 4 - 1/corner           |
| Accessory Wells:                       | 4 - 1/corner           |
| Brake/Steer Pedals:                    | 4 - 1/corner           |
| Hydraulic Controls:                    | Foot Pedal<br>- 1/side |
|  | degrees [°]            |
| Cable Free Fowler:<br>pneumatic-assist | 0 - 90                 |
| Trendelenburg:<br>standard             | 16                     |
| Trendelenburg:<br>reverse              | 16                     |

— Not Applicable/Available

| Models:   | EMCST<br>standard width<br>Retracto™ |        | FMCST<br>wide width<br>Retracto™ |        | GMCST<br>standard width<br>Retracto™ |        | HMCST<br>wide width<br>Retracto™ |        | APAST<br>standard width<br>AirGlide™ |        | CPAST<br>wide width<br>AirGlide™ |        | DPAST<br>wide width<br>AirGlide™ |        |
|---|--------------------------------------|--------|----------------------------------|--------|--------------------------------------|--------|----------------------------------|--------|--------------------------------------|--------|----------------------------------|--------|----------------------------------|--------|
|   | inch                                 | cm†    | inch                             | cm†    | inch                                 | cm†    | inch                             | cm†    | inch                                 | cm†    | inch                             | cm†    | inch                             | cm†    |
| Overall Width:                                      | 30.00                                | 76.20  | 34.50                            | 87.63  | 30.00                                | 76.20  | 34.50                            | 87.63  | 31.25                                | 79.38  | 31.25                            | 79.38  | 35.00                            | 88.90  |
| Overall Height:<br>minimum                          | 22.25                                | 56.50  | 22.25                            | 56.50  | 22.25                                | 56.50  | 22.25                            | 56.50  | 22.00                                | 55.88  | 22.00                            | 55.88  | 22.00                            | 55.88  |
| Patient Surface:<br>width                           | 25.00                                | 63.50  | 30.00                            | 76.20  | 25.25                                | 64.14  | 30.00                            | 76.20  | 38.00                                | 96.52  | 38.00                            | 96.52  | 32.00                            | 81.28  |
| Patient Surface:<br>length                          | 76.00                                | 193.04 | 76.00                            | 193.04 | 76.00                                | 193.04 | 76.00                            | 193.04 | 76.00                                | 193.04 | 76.00                            | 193.04 | 77.00                            | 195.58 |
| Side Rail Length:                                   | 60.00                                | 152.40 | 60.00                            | 152.40 | 60.00                                | 152.40 | 60.00                            | 152.40 | 75.00                                | 190.50 | 75.00                            | 190.50 | 75.00                            | 190.50 |
| Rail Type:  | features                             |        | features                         |        | features                             |        | features                         |        | features                             |        | features                         |        | features                         |        |
|   | Retracto™                            |        | Retracto™                        |        | Retracto™                            |        | Retracto™                        |        | AirGlide™                            |        | AirGlide™                        |        | AirGlide™                        |        |
| Knee Gatch:   | no                                   |        | no                               |        | yes                                  |        | yes                              |        | no                                   |        | yes                              |        | yes                              |        |
| Backrest Movement:                                  | degrees [°]                          |        | degrees [°]                      |        | degrees [°]                          |        | degrees [°]                      |        | degrees [°]                          |        | degrees [°]                      |        | degrees [°]                      |        |
|   | —                                    |        | —                                |        | —                                    |        | —                                |        | 0 - 90                               |        | 0 - 90                           |        | 0 - 90                           |        |
| Knee Flex Movement:                                 | —                                    |        | —                                |        | 0 - 70                               |        | 0 - 70                           |        | —                                    |        | 0 - 70                           |        | 0 - 70                           |        |
| Weight Capacity: <sup>1</sup><br>EVENLY DISTRIBUTED | lb                                   | kg†    | lb                               | kg†    | lb                                   | kg†    | lb                               | kg†    | lb                                   | kg†    | lb                               | kg†    | lb                               | kg†    |
|   | 500                                  | 226.80 | 800                              | 362.87 | 500                                  | 226.80 | 800                              | 362.87 | 500                                  | 226.80 | 500                              | 226.80 | 800                              | 362.87 |
| Shipping Weight: <sup>8</sup>                       | 330                                  | 149.69 | 330                              | 149.69 | 330                                  | 149.69 | 330                              | 149.69 | 370                                  | 167.83 | 370                              | 167.83 | 370                              | 167.83 |





## 493RPCST FLUORO-TRACK™ FLUOROSCOPY STRETCHER

The Fluoro-Track Stretcher is designed for use with C- Arms for fluoroscopy-guided procedures. Its unique design, with a proprietary sliding top, enables a broad range of imaging capacity without repositioning the patient.



- 500 lb (226.80 kg) Weight Capacity – EVENLY DISTRIBUTED<sup>†</sup>
- 18 inch (43 cm) Sliding Top enables a broader range of imaging capacity without repositioning the patient or C-Arm
- Hourglass base design with trimmed sides creates an excellent window for C-arm access from both sides with 23 inch (53 cm) C-arm clearance
- Dual Side Foot Controls for easy height adjustment and Trendelenburg positioning
- Full length radiolucent top
- Dual-column base support provides increased maneuverability
- Stainless Steel 3-Position Retracto rails offer maximum patient access
- Comfort Mattress Pad (optional upgrade - see page 16)

★ See Chart for Specifications

493 Product Info



### Model: 493RPCST fluoroscopy

|                   | inch  | cm <sup>†</sup> |
|-------------------|-------|-----------------|
| Overall Width:    | 29.75 | 75.57           |
| Overall Length:   | 80.25 | 203.84          |
| Overall Height:   | 23.00 | 58.42           |
| Overall Height:   | 36.00 | 91.44           |
| Patient Surface:  | 24.00 | 60.96           |
| Patient Surface:  | 76.00 | 193.04          |
| Side Rail Length: | 64.00 | 162.56          |
| Side Rail Height: | 15.00 | 38.10           |
| Radiolucent Pad:  | 3.00  | 7.62            |
| Caster Diameter:  | 8.00  | 20.32           |

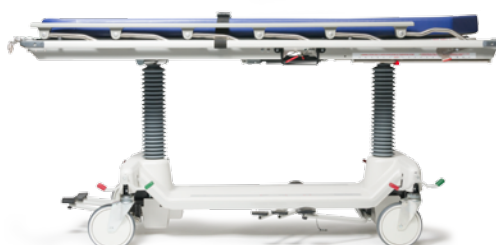
|              | features  |
|--------------|-----------|
| Rail Type:   | Retracto™ |
| Caster Type: | Tente®    |

|                    | degrees [°] |
|--------------------|-------------|
| Backrest Movement: | 0 - 80      |
| Trendelenburg:     | 15          |
| Trendelenburg:     | 15          |

|                               | lb  | kg <sup>‡</sup> |
|-------------------------------|-----|-----------------|
| Weight Capacity: <sup>†</sup> | 500 | 226.80          |
| Shipping Weight: <sup>§</sup> | 364 | 165.11          |



slides 6 inches (19 cm)



centered



slides 12 inches (30 cm)





## 5B800 ELECTRIC ALL PURPOSE BARIATRIC SURGI-STRETCHER

The powered all purpose bariatric stretcher is designed to meet your patient management needs while versatile enough be used in every phase of care.

- 800 lb (362.87 kg) Weight Capacity – EVENLY DISTRIBUTED<sup>1</sup>
- Low-profile head piece allows site access and lateral (side approach) procedures
- Extra-wide 30 inch (76 cm) patient surface provides greater patient comfort for extended stays
- Base cover built in O<sub>2</sub> tank holder and ample storage space
- Stainless steel Retracto® Side Rails with rail caps
- Unit fits easily through doorways
- Easy-to-use interactive hand pendant
- 3-Stage Telescoping IV pole [permanently mounted at foot]
- Leg flex controls are available with electric casters system
- Integrated Ergonomic Push Handles for Increased Staff Safety
- Optional Navigator SmartDrive System
- Four wheel Brake and Steer with electric casters.
- Comfort Mattress and Head Pad (optional upgrade - see page 16)

★ See Chart for Specifications

 **5B800ST** Product Info \*\*\*



### Model: 5B800ST bariatric

|                             | inch  | cm <sup>†</sup> |
|-----------------------------|-------|-----------------|
| Overall Width:              | 37.00 | 93.98           |
| Overall Length:             | 88.38 | 224.60          |
| Overall Height:<br>minimum: | 22.00 | 55.88           |
| Overall Height:<br>maximum: | 40.00 | 101.60          |
| Patient Surface:<br>width:  | 30.00 | 76.20           |
| Patient Surface:<br>length: | 80.25 | 203.50          |
| Side Rail Length:           | 49.00 | 124.46          |
| Side Rail Height:           | 14.00 | 35.56           |
| Mattress Pad:<br>thickness: | 5.00  | 12.70           |
| Caster Diameter:            | 5.90  | 14.99           |

|              | features  |
|--------------|-----------|
| Rail Type:   | Retracto™ |
| Caster Type: | Tente®    |

|                             | degrees [°] |
|-----------------------------|-------------|
| Backrest Movement:          | 0 - 90      |
| Knee Flex Movement:         | 0 - 60      |
| Trendelenburg:<br>standard: | 15          |
| Trendelenburg:<br>reverse:  | 15          |

|            | power     |
|------------|-----------|
| Volts (V)  | 100 - 240 |
| Hertz (Hz) | ~ 50/60   |

|   | lb  | kg <sup>‡</sup> |
|---|-----|-----------------|
| Weight Capacity: <sup>1</sup><br>EVENLY DISTRIBUTED | 800 | 362.87          |
| Shipping Weight: <sup>8</sup>                       | 420 | 190.51          |

## 4160D0ST PEDIATRIC STRETCHERS

The Pediatric Stretcher is ideal for the littlest patients who need the most protection. For infants to six year olds, it provides the safety and security of 360° patient protection and access.

- 325 lb (147.42 kg) Weight Capacity – EVENLY DISTRIBUTED<sup>1</sup>
- Adjustable backrest from 0° – 45° for patient comfort
- Dual Side Foot Controls for easy height adjustment and 10° Trendelenburg positioning
- Extra-high side rails provide three positions for patient safety, access, and transfer
- Removable end rails allow easy patient access
- Brake and Steer Controls accessible at all four corners
- Comfort Mattress Pad (optional upgrade - see page 16)

★ See Chart for Specifications

[4160D0ST Pediatric Product Info](#)





## 462EMPST YOUTH STRETCHERS

The Youth Stretcher is ideal for patients who are too large for a crib or pediatric stretcher from six years of age to adolescence, but still require 360° protection. It is intended for easy transport, examination and care of smaller patients in healthcare facilities.

- 500 lb (226.80 kg) Weight Capacity – EVENLY DISTRIBUTED<sup>1</sup>
- Dual Side Foot Controls for easy height adjustment and 12° Trendelenburg positioning
- Pneumatic-Assisted backrest from 0° – 90° for patient comfort and safer staff use
- 3-position vertical side rails for patient safety and transfer
- Brake and Steer Controls accessible at all four corners
- Center Track Steering for superb mobility
- Comfort Mattress Pad (optional upgrade - see page 16)

★ See Chart for Specifications

 462EMPST Youth Product Info



| Models:                       | 4160D0ST<br><i>pediatric</i> |                 | 462EMPST<br><i>youth</i> |                 |
|-------------------------------|------------------------------|-----------------|--------------------------|-----------------|
|                               | inch                         | cm <sup>†</sup> | inch                     | cm <sup>†</sup> |
| Overall Width:                | 29.75                        | 75.57           | 30.00                    | 76.20           |
| Overall Length:               | 59.25                        | 150.50          | 83.00                    | 210.82          |
| Overall Height:               | 32.25                        | 81.92           | 28.50                    | 72.39           |
| Overall Height:               | 39.00                        | 99.06           | 37.00                    | 93.98           |
| Patient Surface:              | 25.00                        | 63.50           | 25.00                    | 63.50           |
| Patient Surface:              | 56.00                        | 142.24          | 75.00                    | 193.04          |
| Side Rail Length:             | 56.00                        | 142.24          | 73.00                    | 185.42          |
| Side Rail Height:             | 17.75                        | 45.09           | 16.00                    | 40.64           |
| End Rail Length:              | 23.00                        | 58.42           | 23.00                    | 58.42           |
| End Rail Height:              | 17.75                        | 45.09           | 16.00                    | 40.64           |
| Spindle Gap:                  | 3.00                         | 9.53            | 2.50                     | 10.16           |
| Spindle Gap:                  | 3.37                         | 8.56            | 4.00                     | 6.35            |
| Mattress Pad:                 | 3.00                         | 7.62            | 3.00                     | 7.62            |
| Caster Diameter:              | 8.00                         | 20.32           | 8.00                     | 20.32           |
| Caster Type:                  | features<br>Tente®           |                 | features<br>Tente®       |                 |
| Hydraulic Controls:           | dual side foot pedals        |                 | dual side foot pedals    |                 |
| Backrest Control:             | manual                       |                 | pneumatic assist         |                 |
| Fowler Backrest:              | degrees [°]                  |                 | degrees [°]              |                 |
| Trendelenburg:                | 10                           |                 | 12                       |                 |
| Trendelenburg:                | 10                           |                 | 12                       |                 |
| Weight Capacity: <sup>1</sup> | lb                           | kg <sup>†</sup> | lb                       | kg <sup>†</sup> |
| Shipping Weight: <sup>8</sup> | 332                          | 150.59          | 383                      | 173.73          |





| Item                                      | Description                                    | Size <sup>4</sup> |            | UOM <sup>3</sup> | 4160D0ST | 462EMPST | 462EMCST | 462FMCST | 462GMCST | 462HMCST | 462APAST | 462CPAST | 462DPAST | 493RPCST | 5B800ST *** | 5B800ST-PD *** | 5E8EYEST | 5D8EYEST | 5E8EYXST | 5D8EYXST | 578EYEST | 578EYXST | 5E82EYEST | 5E82EYEST-PD | 5E82EYXST | 5E82EYXST-PD |  |
|---|--|-------------------|------------|------------------|----------|----------|----------|----------|----------|----------|----------|----------|----------|----------|-------------|----------------|----------|----------|----------|----------|----------|----------|-----------|--------------|-----------|--------------|--|
|   |  | inch              | cm†        |                  |          |          |          |          |          |          |          |          |          |          |             |                |          |          |          |          |          |          |           |              |           |              |  |
| Accessory Rails                           |  |                   |            |                  |          |          |          |          |          |          |          |          |          |          |             |                |          |          |          |          |          |          |           |              |           |              |  |
| H076540                                   | AirGlide™ Surgical                             | 9.75              | 24.77      |                  |          |          |          |          |          |          |          |          |          |          |             |                |          |          |          |          |          |          |           |              |           |              |  |
| H076336                                   | Retracto® Surgical                             | 11.50             | 29.21      |                  |          |          |          |          |          |          |          |          |          |          |             |                |          |          |          |          |          |          |           |              |           |              |  |
| HSA400700                                 | Surgical                                       | 8.50              | 20.32      | pair             |          |          |          |          |          |          |          |          |          |          |             |                |          |          |          |          |          |          |           |              |           |              |  |
| HSA080025                                 | Surgical Back Section                          | 8.00              | 20.32      |                  |          |          |          |          |          |          |          |          |          |          |             |                |          |          |          |          |          |          |           |              |           |              |  |
| Armboards                                 |  |                   |            |                  |          |          |          |          |          |          |          |          |          |          |             |                |          |          |          |          |          |          |           |              |           |              |  |
| H07633400                                 | with Rail Adapter                              |                   |            |                  |          |          |          |          |          |          |          |          |          |          |             |                |          |          |          |          |          |          |           |              |           |              |  |
| H06518000                                 | with Rail Adapter                              | 1                 | 2.54       |                  |          |          |          |          |          |          |          |          |          |          |             |                |          |          |          |          |          |          |           |              |           |              |  |
| HSA080017-xxx                             | Surgical                                       |                   |            |                  |          |          |          |          |          |          |          |          |          |          |             |                |          |          |          |          |          |          |           |              |           |              |  |
| HSA400500-xxx                             | use with Pad <sup>2</sup> and 2 Mounting Rails | 2                 | 5.08       |                  |          |          |          |          |          |          |          |          |          |          |             |                |          |          |          |          |          |          |           |              |           |              |  |
| Cassette Holder                           |  |                   |            |                  |          |          |          |          |          |          |          |          |          |          |             |                |          |          |          |          |          |          |           |              |           |              |  |
| H00005400                                 | Lateral X-Ray                                  |                   |            |                  |          |          |          |          |          |          |          |          |          |          |             |                |          |          |          |          |          |          |           |              |           |              |  |
| HSA080023                                 | Lateral X-Ray                                  |                   |            |                  |          |          |          |          |          |          |          |          |          |          |             |                |          |          |          |          |          |          |           |              |           |              |  |
| Drainage                                  |  |                   |            |                  |          |          |          |          |          |          |          |          |          |          |             |                |          |          |          |          |          |          |           |              |           |              |  |
| H12884A                                   | Bag Hook                                       | 4.25 x 1.3        | 10.8 x 3.3 |                  |          |          |          |          |          |          |          |          |          |          |             |                |          |          |          |          |          |          |           |              |           |              |  |
| Footboards                                |  |                   |            |                  |          |          |          |          |          |          |          |          |          |          |             |                |          |          |          |          |          |          |           |              |           |              |  |
| H00CR6B00                                 | Chartholder Only                               |                   |            |                  |          |          |          |          |          |          |          |          |          |          |             |                |          |          |          |          |          |          |           |              |           |              |  |
| H0CRW6B00                                 | Chartholder Only - extra wide                  |                   |            |                  |          |          |          |          |          |          |          |          |          |          |             |                |          |          |          |          |          |          |           |              |           |              |  |
| Footboards/Headboards - w/ Chartholder    |  |                   |            |                  |          |          |          |          |          |          |          |          |          |          |             |                |          |          |          |          |          |          |           |              |           |              |  |
| H00006B00                                 | Stationary                                     |                   |            |                  |          |          |          |          |          |          |          |          |          |          |             |                |          |          |          |          |          |          |           |              |           |              |  |
| H06884600                                 | Extension - extra wide                         |                   |            |                  |          |          |          |          |          |          |          |          |          |          |             |                |          |          |          |          |          |          |           |              |           |              |  |
| H000W6B00                                 | Stationary                                     |                   |            |                  |          |          |          |          |          |          |          |          |          |          |             |                |          |          |          |          |          |          |           |              |           |              |  |
| H06722500                                 | Stationary - extra wide                        |                   |            |                  |          |          |          |          |          |          |          |          |          |          |             |                |          |          |          |          |          |          |           |              |           |              |  |
| H06938100                                 | Stationary                                     |                   |            |                  |          |          |          |          |          |          |          |          |          |          |             |                |          |          |          |          |          |          |           |              |           |              |  |
| H06929900                                 | Extension                                      |                   |            |                  |          |          |          |          |          |          |          |          |          |          |             |                |          |          |          |          |          |          |           |              |           |              |  |
| H00CR7B00                                 | Folding Combo Extension - regular width        |                   |            |                  |          |          |          |          |          |          |          |          |          |          |             |                |          |          |          |          |          |          |           |              |           |              |  |
| Footboards/Monitor Shelf - w/ Chartholder |  |                   |            |                  |          |          |          |          |          |          |          |          |          |          |             |                |          |          |          |          |          |          |           |              |           |              |  |
| H06883600                                 | Extension - regular width                      |                   |            |                  |          |          |          |          |          |          |          |          |          |          |             |                |          |          |          |          |          |          |           |              |           |              |  |
| H06884600                                 | Extension - extra wide                         |                   |            |                  |          |          |          |          |          |          |          |          |          |          |             |                |          |          |          |          |          |          |           |              |           |              |  |
| H07634700                                 | Stationary                                     |                   |            |                  |          |          |          |          |          |          |          |          |          |          |             |                |          |          |          |          |          |          |           |              |           |              |  |
| H06883500                                 | Extension                                      |                   |            |                  |          |          |          |          |          |          |          |          |          |          |             |                |          |          |          |          |          |          |           |              |           |              |  |
| Foot Control Headboards                   |  |                   |            |                  |          |          |          |          |          |          |          |          |          |          |             |                |          |          |          |          |          |          |           |              |           |              |  |
| HSA080000                                 | Electric - Hi/Low                              |                   |            |                  |          |          |          |          |          |          |          |          |          |          |             |                |          |          |          |          |          |          |           |              |           |              |  |
| HSA080014                                 | FS3 Switch - Hi/Low                            |                   |            |                  |          |          |          |          |          |          |          |          |          |          |             |                |          |          |          |          |          |          |           |              |           |              |  |
| Headboards                                |  |                   |            |                  |          |          |          |          |          |          |          |          |          |          |             |                |          |          |          |          |          |          |           |              |           |              |  |
| HSA078700                                 | Pre-Op/Post-Op Extension - regular width       |                   |            |                  |          |          |          |          |          |          |          |          |          |          |             |                |          |          |          |          |          |          |           |              |           |              |  |
| HSA079000                                 | Pre-Op/Post-Op Extension - extra wide          |                   |            |                  |          |          |          |          |          |          |          |          |          |          |             |                |          |          |          |          |          |          |           |              |           |              |  |
| HSA080029-xxx                             | Ortho Hand Surgery Board                       |                   |            |                  |          |          |          |          |          |          |          |          |          |          |             |                |          |          |          |          |          |          |           |              |           |              |  |
| Item                                      | Description                                    | inch              | cm†        | UOM <sup>3</sup> | 4160D0ST | 462EMPST | 462EMCST | 462FMCST | 462GMCST | 462HMCST | 462APAST | 462CPAST | 462DPAST | 493RPCST | *** 5B800ST | *** 5B800ST-PD | 5E8EYEST | 5D8EYEST | 5E8EYXST | 5D8EYXST | 578EYEST | 578EYXST | 5E82EYEST | 5E82EYEST-PD | 5E82EYXST | 5E82EYXST-PD |  |

gf

Proudly  
Made  
in the  
USA





| Item                    | Description  | Size <sup>4</sup> |                 | UOM <sup>3</sup> | 4160D0ST | 462EMPST | 462EMCST | 462FMCST | 462GMCST | 462HMCST | 462APAST | 462CPAST | 462DPAST | 493RPCST | 5B800ST *** | 5B800ST-PD *** | 5E8EYEST | 5D8EYEST | 5E8EYXST | 5D8EYXST | 578EYEST | 578EYXST | 5E82EYEST | 5E82EYEST-PD | 5E82EYXST | 5E82EYXST-PD |  |
|-------------------------|--|-------------------|-----------------|------------------|----------|----------|----------|----------|----------|----------|----------|----------|----------|----------|-------------|----------------|----------|----------|----------|----------|----------|----------|-----------|--------------|-----------|--------------|--|
|                         |  | inch              | cm <sup>†</sup> |                  |          |          |          |          |          |          |          |          |          |          |             |                |          |          |          |          |          |          |           |              |           |              |  |
| Headrests               |  |                   |                 |                  |          |          |          |          |          |          |          |          |          |          |             |                |          |          |          |          |          |          |           |              |           |              |  |
| H131490-xxx             | Articulating <sup>2</sup>  | 22                | 55.88           |                  |          | ■        | ■        |          | ■        |          |          |          |          | ■        |             |                |          |          |          |          |          |          |           |              |           |              |  |
| H131495-xxx             | Articulating <sup>2</sup>  | 27                | 68.58           |                  |          |          |          | ■        |          | ■        |          |          |          |          | ■           | ■              |          |          |          |          |          |          |           |              |           |              |  |
| HSA094100-xxx           | Standard Articulating <sup>2</sup>   | 18                | 45.72           |                  |          |          |          |          |          |          | ■        | ■        |          |          |             |                |          |          |          |          |          |          |           |              |           |              |  |
| HSA0942-xxx             | Extra-Wide Articulating <sup>2</sup>   | 21                | 53.34           |                  |          |          |          |          |          |          |          |          | ■        |          |             |                |          |          |          |          |          |          |           |              |           |              |  |
| H0101ST-xxx             | Set of Sizes Below <sup>2</sup>  |                   |                 | 3/set            |          |          |          |          |          |          |          |          |          |          |             |                | ■        | ■        | ■        | ■        | ■        | ■        | ■         | ■            | ■         | ■            |  |
| HSA063500-xxx           | - large <sup>2</sup>   | 4                 | 10.2            | each             |          |          |          |          |          |          |          |          |          |          |             |                | ■        | ■        | ■        | ■        | ■        | ■        | ■         | ■            | ■         | ■            |  |
| HP150830448-xxx         | - medium <sup>2</sup>  | 3                 | 7.6             | each             |          |          |          |          |          |          |          |          |          |          |             |                | ■        | ■        | ■        | ■        | ■        | ■        | ■         | ■            | ■         | ■            |  |
| HP150830447-xxx         | - small <sup>2</sup>   | 2                 | 5               | each             |          |          |          |          |          |          |          |          |          |          |             |                | ■        | ■        | ■        | ■        | ■        | ■        | ■         | ■            | ■         | ■            |  |
| Heel Stirrups           |  |                   |                 |                  |          |          |          |          |          |          |          |          |          |          |             |                |          |          |          |          |          |          |           |              |           |              |  |
| H00N16A00               | with Mounting Adapter  |                   |                 |                  |          | ■        | ■        | ■        | ■        | ■        |          |          |          | ■        | ■           | ■              |          |          |          |          |          |          | ■         | ■            | ■         | ■            |  |
| H00C16H00               | w/o Mounting Adapter   |                   |                 | pair             |          |          |          |          |          |          | ■        | ■        | ■        |          | ■           | ■              |          |          |          |          |          |          | ■         | ■            | ■         | ■            |  |
| H00L16M00               | Adapter Clamps   |                   |                 |                  |          |          |          |          |          |          | ■        | ■        | ■        |          | ■           | ■              |          |          |          |          |          |          | ■         | ■            | ■         | ■            |  |
| Holders                 |  |                   |                 |                  |          |          |          |          |          |          |          |          |          |          |             |                |          |          |          |          |          |          |           |              |           |              |  |
| H12845000               | Oxygen Tank Vertical   |                   |                 | each             |          | ■        | ■        | ■        | ■        | ■        |          |          |          | ■        |             |                | ■        |          |          |          | ■        | ■        | ■         |              |           |              |  |
| HSA080010               | Vertical O2 Tank Holder  | 23.00             | 58.42           | each             |          |          |          |          |          |          |          |          |          |          | ■           | ■              |          |          |          |          |          |          | ■         | ■            | ■         | ■            |  |
| H06925700               | Paper Roll   |                   |                 | each             | ■        | ■        | ■        | ■        | ■        | ■        | ■        | ■        | ■        | ■        | ■           |                | ■        | ■        | ■        | ■        | ■        | ■        | ■         |              | ■         |              |  |
| IV Poles                |  |                   |                 |                  |          |          |          |          |          |          |          |          |          |          |             |                |          |          |          |          |          |          |           |              |           |              |  |
| H000E1700               | Fixed Height   | 42                | 106.68          |                  | ■        | ■        | ■        | ■        | ■        | ■        | ■        | ■        | ■        | ■        | ■           | ■              | ■        | ■        | ■        | ■        | ■        | ■        | ■         | ■            | ■         | ■            |  |
| H000018                 | Stainless Telescoping  | 27 - 54           | 68.6 - 137.2    |                  | ■        | ■        | ■        | ■        | ■        | ■        | ■        | ■        | ■        | ■        | ■           | ■              | ■        | ■        | ■        | ■        | ■        | ■        | ■         | ■            | ■         | ■            |  |
| H06589700               | Mobile Stand Attachment  |                   |                 |                  | ■        | ■        | ■        | ■        | ■        | ■        |          |          |          | ■        |             |                |          |          |          |          |          |          |           |              |           |              |  |
| HIVSTOW00               | Mobile Stand Attachment  |                   |                 |                  |          |          |          |          |          |          | ■        | ■        | ■        |          |             |                |          |          |          |          |          |          |           |              |           |              |  |
| H080770                 | and Monitor Rod - <i>Telescoping Stainless Steel</i>                           |                   |                 |                  | ■        | ■        | ■        | ■        | ■        | ■        | ■        | ■        | ■        | ■        | ■           | ■              | ■        | ■        | ■        | ■        | ■        | ■        | ■         | ■            | ■         | ■            |  |
| HSA080018               | Pendant Holder   |                   |                 |                  | ■        | ■        | ■        | ■        | ■        | ■        | ■        | ■        | ■        | ■        | ■           | ■              | ■        | ■        | ■        | ■        | ■        | ■        | ■         | ■            | ■         | ■            |  |
| Monitor Shelf           |  |                   |                 |                  |          |          |          |          |          |          |          |          |          |          |             |                |          |          |          |          |          |          |           |              |           |              |  |
| H000N4500               | Standard   |                   |                 |                  |          | ■        | ■        |          | ■        |          |          |          |          | ■        |             |                | ■        | ■        | ■        |          |          |          |           |              |           |              |  |
| H00WN4500               | Wide   |                   |                 |                  |          |          |          | ■        |          | ■        |          |          |          |          | ■           | ■              | ■        |          |          | ■        | ■        |          |           | ■            |           |              |  |
| Oxygen Delivery Systems |  |                   |                 |                  |          |          |          |          |          |          |          |          |          |          |             |                |          |          |          |          |          |          |           |              |           |              |  |
| HSA400600               | Oxyflex II Kit<br>— <i>Flexible Support Structure, Adapter, and Well Mount</i> |                   |                 |                  | ■        | ■        | ■        | ■        | ■        | ■        | ■        | ■        | ■        | ■        | ■           | ■              | ■        | ■        | ■        | ■        | ■        | ■        | ■         | ■            | ■         | ■            |  |
| HSA008000               | Disposable Oxyflex II Diffusion Trays<br>— <i>Includes 24 inch Tube</i>        |                   |                 | 25/cs            | ■        | ■        | ■        | ■        | ■        | ■        | ■        | ■        | ■        | ■        | ■           | ■              | ■        | ■        | ■        | ■        | ■        | ■        | ■         | ■            | ■         | ■            |  |
| HSA007900               | Oxyflex II Kit<br>— <i>Flexible Support Structure and Tuck Plate</i>           |                   |                 |                  | ■        | ■        | ■        | ■        | ■        | ■        | ■        | ■        | ■        | ■        | ■           | ■              | ■        | ■        | ■        | ■        | ■        | ■        | ■         | ■            | ■         | ■            |  |
| Push Handles            |  |                   |                 |                  |          |          |          |          |          |          |          |          |          |          |             |                |          |          |          |          |          |          |           |              |           |              |  |
| H07565600               | Foot End Only  |                   |                 |                  |          | ■        | ■        | ■        | ■        | ■        |          | ■        |          | ■        |             |                |          |          |          |          |          |          |           |              |           |              |  |
| H07566400               | Assembly   |                   |                 |                  |          |          |          |          |          |          | ■        | ■        |          |          |             |                |          |          |          |          |          |          |           |              |           |              |  |
| H07566500               | Assembly   |                   |                 |                  |          |          |          |          |          |          |          |          | ■        |          |             |                |          |          |          |          |          |          |           |              |           |              |  |
| Item                    | Description  | inch              | cm <sup>†</sup> | UOM <sup>3</sup> | 4160D0ST | 462EMPST | 462EMCST | 462FMCST | 462GMCST | 462HMCST | 462APAST | 462CPAST | 462DPAST | 493RPCST | *** 5B800ST | *** 5B800ST-PD | 5E8EYEST | 5D8EYEST | 5E8EYXST | 5D8EYXST | 578EYEST | 578EYXST | 5E82EYEST | 5E82EYEST-PD | 5E82EYXST | 5E82EYXST-PD |  |



| Item          | Description                              | Size <sup>4</sup> |                 | UOM <sup>3</sup> | 4160DOST | 462EMPST | 462EMCST | 462FMCST | 462GMCST | 462HMCST | 462APAST | 462CPAST | 462DPAST | 493RPCST | 5B800ST *** | 5B800ST-PD *** | 5E8EYEST | 5D8EYEST | 5E8EYXST | 5D8EYXST | 578EYEST | 578EYXST | 5E82EYEST | 5E82EYEST-PD | 5E82EYXST | 5E82EYXST-PD |  |
|---------------|--|-------------------|-----------------|------------------|----------|----------|----------|----------|----------|----------|----------|----------|----------|----------|-------------|----------------|----------|----------|----------|----------|----------|----------|-----------|--------------|-----------|--------------|--|
|               |  | inch              | cm <sup>†</sup> |                  |          |          |          |          |          |          |          |          |          |          |             |                |          |          |          |          |          |          |           |              |           |              |  |
| Rail Covers   |  |                   |                 |                  |          |          |          |          |          |          |          |          |          |          |             |                |          |          |          |          |          |          |           |              |           |              |  |
| HPD0610-xxx   | Retracto® Pad - 4 Leg Set: <sup>2</sup>  |                   |                 |                  |          | ■        |          |          |          |          | ■        | ■        | ■        |          |             |                | ■        | ■        | ■        | ■        | ■        |          |           |              |           |              |  |
| HPD0612-xxx   | Retracto® Pad - 6 Leg Set: <sup>2</sup>  |                   |                 |                  |          |          | ■        | ■        | ■        | ■        |          |          |          | ■        | ■           | ■              |          |          |          |          |          |          | ■         | ■            | ■         | ■            |  |
| H00011P00-xxx | Side & End Pads <sup>2</sup>             |                   |                 |                  | ■        |          |          |          |          |          |          |          |          |          |             |                |          |          |          |          |          |          |           |              |           |              |  |
| H00P11R00-xxx | Side & End Pads <sup>2</sup>             |                   |                 |                  |          | ■        |          |          |          |          |          |          |          |          |             |                |          |          |          |          |          |          |           |              |           |              |  |
| Safety Straps |  |                   |                 |                  |          |          |          |          |          |          |          |          |          |          |             |                |          |          |          |          |          |          |           |              |           |              |  |
| H00001200     | with Buckle                              |                   |                 |                  | ■        | ■        | ■        | ■        | ■        | ■        | ■        | ■        | ■        | ■        |             |                | ■        |          |          |          | ■        | ■        | ■         |              |           |              |  |
| HSA080015     | with Buckle and Clip                     |                   |                 |                  |          |          |          |          |          |          |          |          |          |          | ■           | ■              |          |          |          |          |          |          | ■         | ■            | ■         | ■            |  |
| Trays         |  |                   |                 |                  |          |          |          |          |          |          |          |          |          |          |             |                |          |          |          |          |          |          |           |              |           |              |  |
| H06536600     | Universal Patient                        |                   |                 |                  | ■        | ■        | ■        | ■        | ■        | ■        | ■        | ■        | ■        | ■        | ■           |                | ■        | ■        | ■        | ■        | ■        | ■        |           |              | ■         |              |  |
| HSA080022     | Patient - <i>next generation</i>         | 16 x 23.31        | 40.64 x 59.21   |                  |          |          |          |          |          |          |          |          |          |          | ■           | ■              |          |          |          |          |          |          | ■         | ■            | ■         | ■            |  |
| H13317000     | Under Fowler Utility                     |                   |                 |                  |          | ■        | ■        |          | ■        |          |          |          |          | ■        |             |                |          |          |          |          |          |          |           |              |           |              |  |
| H13317100     | Under Fowler Utility - <i>extra wide</i> |                   |                 |                  |          |          |          | ■        |          | ■        |          |          |          |          |             |                |          |          |          |          |          |          |           |              |           |              |  |
| Wrist Rests   |  |                   |                 |                  |          |          |          |          |          |          |          |          |          |          |             |                |          |          |          |          |          |          |           |              |           |              |  |
| HSA078500     | Dual Lateral - Half "U"                  |                   |                 |                  |          |          |          |          |          |          |          |          |          |          |             |                | ■        | ■        | ■        | ■        | ■        | ■        | ■         | ■            | ■         | ■            |  |
| HSA078600     | Full "U" - <i>over brow</i>              |                   |                 |                  |          |          |          |          |          |          |          |          |          |          |             |                | ■        | ■        | ■        | ■        | ■        | ■        | ■         | ■            | ■         | ■            |  |
| HSP100400     | Full "U" - Tall - <i>gray</i>            |                   |                 |                  |          |          |          |          |          |          |          |          |          |          |             |                | ■        | ■        | ■        | ■        | ■        | ■        | ■         | ■            | ■         | ■            |  |
| Item          | Description                              | inch              | cm <sup>†</sup> | UOM <sup>3</sup> | 4160DOST | 462EMPST | 462EMCST | 462FMCST | 462GMCST | 462HMCST | 462APAST | 462CPAST | 462DPAST | 493RPCST | *** 5B800ST | *** 5B800ST-PD | 5E8EYEST | 5D8EYEST | 5E8EYXST | 5D8EYXST | 578EYEST | 578EYXST | 5E82EYEST | 5E82EYEST-PD | 5E82EYXST | 5E82EYXST-PD |  |



### Accessory Rail

Mounts armboards or accessories for ease of use and optimum patient positioning

Item No: H076336



### Armboard

Mounts to surgical accessory rail for greater flexibility in patient positioning

Item No: H07633400



### Lateral X-Ray Cassette Holder

Allows X-ray imaging without patient transfer for added versatility

Item No: H00005400



### Footboard with Chartholder

Fixed footboard minimizes patient slipping and allows easy access to patient chart

Item No: H00CR6B00



### Footboard with Monitor Shelf and Chartholder

Versatile footboard supports a monitor/defibrillator plus chartholder

Item No: H06883600



### Foot Control

Electric - Hi/Low allows easy height adjustments

Item No: HSA080000





## Headrest Kit (3pc):

Includes 3 headrests <sup>2</sup>  
(large, medium, and small)

Item No: H0101ST-xxx <sup>2</sup> includes:  
HSA063500-xxx <sup>2</sup>  
HP150830448-xxx <sup>2</sup>  
HP150830447-xxx <sup>2</sup>



## Heel Stirrups

Attachable stirrups allow greater exam flexibility

Item No: H00N16A00



## Oxygen Tank Holder

Safely stores O2 tanks out of the procedure field

Item No: H12845000



## Paper Roll Holder

Accommodates standard exam paper rolls to protect chair

Item No: H06925700



## Mobile IV Attachment (left) Telescoping IV Poles (right)

Position Telescoping IV  
from 27-54 inches (68-137 cm)

(left) Item No: H06589700  
(right) Item No: H000018



## Monitor Shelf

Versatile supports a monitor/  
defibrillator

Item No: H00WN4500



## OxyFlex II

Allows a smooth and even flow of  
oxygen to the surgical area

Item No: HSA400600 <sup>6</sup>



## Push Handles

Provides extra control, easy start-ups  
and enhanced staff safety

Item No: H07565600



## Rail Covers

Slip-on side and end covers  
for extra patient protection

Item No: H00011P00-xxx <sup>2</sup>



## Safety Straps

Multiple size, replacement style options  
to enhance patient safety

Item No: H00001200



## Universal Tray

Enhance patient convenience  
with space for personal belongings  
or supplies

Item No: H06536600



## Under Fowler Utility Tray

Increased storage space while  
backrest is elevated

Item No: H13317000



## Wrist Rests

Full "U" (right) for greater surgeon  
control and positioning during  
EYE/ENT procedures.

Dual Arm (left) allows independent  
positioning for enhanced surgeon  
comfort

(left) Item No: HSA078500  
(right) Item No: HSA078600



## STANDARD SERIES

2-layer foam construction for comfort

## STANDARD STRETCHER PAD

The Hausted Stretcher Pad comes standard on our stretchers. The 2-layer foam construction provides patient comfort. The Guardian EcoSense Vinyl fabric cover is fluid resistant, durable and easy to clean.

## 600C — COMFORT CARE SERIES

3-layer construction with contour-cut grid pattern provides greater airflow and improves patient immersion

## COMFORT CARE STRETCHER UPGRADE PAD

The Hausted Comfort Care Stretcher Pad is an excellent upgrade option when longer patient stays may occur. The 5-inch (13 cm) thickness provides maximum support and pressure reduction properties compared to a standard pad. The contour-cut grid and 3-layer foam design provides greater airflow, improves patient immersion, and extended patient use. The fluid-resistant 4-way stretch urethane (Sure-Chek Fusion III) cover keeps the patient cool and comfortable while providing maximum resistance against spills, staining and odors.

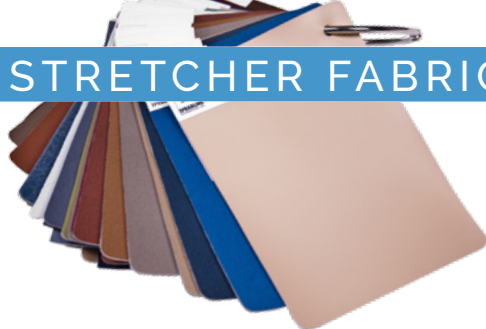
| Stretcher Model N°: | SENTRY<br>Guardian EcoSense Fabric |     |     | BLACK<br>Herculite® Lectrolite™ Fabric |     | BLACK<br>Sure-Chek® Comfort Fabric | SPRUCE<br>Sure-Chek® Fusion III Fabric <sup>2</sup> | NAVY<br>Sure-Chek® Fusion III Fabric <sup>2</sup> | BLACK<br>Sure-Chek® Fusion III Fabric <sup>2</sup> |
|---------------------|------------------------------------|-----|-----|--|-----|------------------------------------|---|---|--|
|                     | 1324                               | 040 | 036 | 043                                    | 047 | 036                                |   |   |  |
| Pad Options:        | ■                                  | ■   | ■   | ■                                      | ■   | ■                                  | ■   | ■   | ■  |
| 416D0ST             | ■                                  | ■   | ■   | ■                                      | ■   | ■                                  | ■   | ■   | ■  |
| 462EMPST            | ■                                  | ■   | ■   | ■                                      | ■   | ■                                  | ■   | ■   | ■  |
| 462EMCST            | ■                                  | ■   | ■   | ■                                      | ■   | ■                                  | ■   | ■   | ■  |
| 462FMCST            | ■                                  | ■   | ■   | ■                                      | ■   | ■                                  | ■   | ■   | ■  |
| 462GMCST            | ■                                  | ■   | ■   | ■                                      | ■   | ■                                  | ■   | ■   | ■  |
| 462HMCST            | ■                                  | ■   | ■   | ■                                      | ■   | ■                                  | ■   | ■   | ■  |
| 462APAST            | ■                                  | ■   | ■   | ■                                      | ■   | ■                                  | ■   | ■   | ■  |
| 462CPAST            | ■                                  | ■   | ■   | ■                                      | ■   | ■                                  | ■   | ■   | ■  |
| 462DPAST            | ■                                  | ■   | ■   | ■                                      | ■   | ■                                  | ■   | ■   | ■  |
| 493RPCST            | ■                                  | ■   | ■   | ■                                      | ■   | ■                                  | ■   | ■   | ■  |
| 5E8EYEST            | ■                                  | ■   | ■   | ■                                      | ■   | ■                                  | ■   | ■   | ■  |
| 5D8EYEST            | ■                                  | ■   | ■   | ■                                      | ■   | ■                                  | ■   | ■   | ■  |
| 5E8EYXST            | ■                                  | ■   | ■   | ■                                      | ■   | ■                                  | ■   | ■   | ■  |
| 5D8EYXST            | ■                                  | ■   | ■   | ■                                      | ■   | ■                                  | ■   | ■   | ■  |
| 578EYEST            | ■                                  | ■   | ■   | ■                                      | ■   | ■                                  | ■   | ■   | ■  |
| 578EYXST            | ■                                  | ■   | ■   | ■                                      | ■   | ■                                  | ■   | ■   | ■  |
| 5E82EYEST           | ■                                  | ■   | ■   | ■                                      | ■   | ■                                  | ■   | ■   | ■  |
| 5E82EYXST           | ■                                  | ■   | ■   | ■                                      | ■   | ■                                  | ■   | ■   | ■  |
| 5E82EYEST-PD        | ■                                  | ■   | ■   | ■                                      | ■   | ■                                  | ■   | ■   | ■  |
| 5E82EYXST-PD        | ■                                  | ■   | ■   | ■                                      | ■   | ■                                  | ■   | ■   | ■  |

■ Standard Pad ■ Standard Fabric Color ■ Optional Fabric Color — Not Available  
■ Upgraded Fabric & Pad ★ Matching Head Pad Set

model number shown orders frame with standard and pad fabric • ordering options: add an 'x' at the end of the model number (orders frame only), then order desired pad and fabric as a separate item







## STANDARD STRETCHER FABRICS

The Hausted standard stretcher pads use fabrics designed to meet the demands in a healthcare environment. Pads are fluid-resistant and resist staining from most contaminants such as medications, oils, and more. The fabric contains antimicrobial additives designed to help protect the fabric against odor-forming bacterial growth and reduces undesirable organic odors.



1324 SENTRY

## GUARDIAN ECOSENSE FABRIC

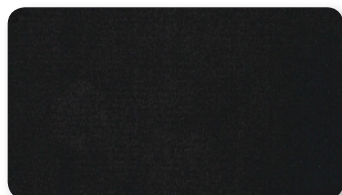
Guardian EcoSense is a polyvinyl material designed with antimicrobial protection and resistance to abrasion and stains. The fabric is easy to clean and contains anti-static properties.



040 BLACK

## HERCULITE® LECTROLITE COMFORT VINYL

Lectrolite is a conductive vinyl laminated fabric to help control electrostatic discharge. This conductive fabric cover also prevents the accumulation of a static charge that can interfere with sensitive electronic equipment. Lectrolite conforms comfortably to the body thereby allowing the patient to benefit from the comfort features of the stretcher pad.

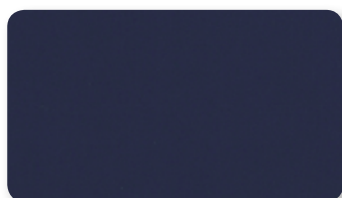


036 BLACK

## SURE-CHEK® COMFORT FABRIC

Sure-Chek Comfort is a fluid and moisture-resistant cover known for its durability and easy cleaning. It is a vinyl laminate material that conforms to the body and allows the inner construction of the stretcher pad to provide comfort and support.

## STANDARD BARIATRIC STRETCHER FABRIC

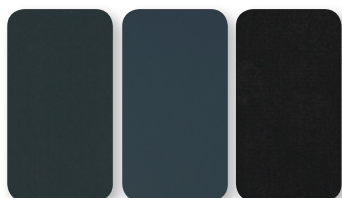


051 NAVY

## PRIMASTRETCH FABRIC

Primastretch is engineered with high tensile strength for durability for bariatric use. The 4-way stretch Urethane coated nylon cover is breathable and reduces friction and skin shear while helping to keep the patient cool and comfortable.

## UPGRADE STRETCHER FABRICS



043 SPRUCE

047 NAVY

036 BLACK

## SURE-CHEK® FUSION III®

The Sure-Chek Fusion III is engineered for maximum performance. The 4-way Stretch fluid-resistant Urethane cover reduces friction and skin shear while helping to keep the patient cool and comfortable. The fabric provides maximum resistance against spills, staining, and odors. The fabrics incorporates antimicrobial additives designed to help protect the fabric against odor-forming bacterial growth to reduce undesirable organic odors.

model number shown orders frame with standard and pad fabric

• ordering options: add an 'x' at the end of the model number (orders frame only), then order desired pad and fabric as a separate item

| Bariatric<br>Stretcher<br>Model No.: | NAVY<br>Primastretch Fabric | SPRUCE<br>Sure-Chek® Fusion III Fabric <sup>2</sup> | NAVY<br>Sure-Chek® Fusion III Fabric <sup>2</sup> | BLACK<br>Sure-Chek® Fusion III Fabric <sup>2</sup> |
|--------------------------------------|-----------------------------|---|---|--|
|                                      | 051                         | 043   | 047   | 036  |
| Pad Options:                         | ■                           | ■   | ■   | ■  |
| 5B800ST                              | ■<br>H081385-051            | ■<br>600C-081385-xxx                                | ■<br>600C-081385-xxx                              | ■<br>600C-081385-xxx                               |
| 5B800ST-PD                           | ■<br>H081385-051            | ■<br>600C-081385-xxx                                | ■<br>600C-081385-xxx                              | ■<br>600C-081385-xxx                               |

■ Standard Fabric Color ■ Standard Pad: ■ Upgraded Fabric & Pad:

## HSS500 SURGEONS STOOL

Built for performance and surgeon comfort. Ideal for Eye, ENT, and Plastic procedures.

- 300 lb (136.08 kg) Weight Capacity – EVENLY DISTRIBUTED<sup>1</sup>
- 360° rotating urethane armrest for comfortable arm positioning
- Lightweight, maneuverable unit fits easily through doorways
- Foot-controlled hydraulics with Three-Spindle Base and Four 3 inch (8 cm) Casters
- Dual-density Foam Seat with Dura-Gel® Insert for Enhanced Comfort
- 180° Arm Rest Support for more Stable Arm Positioning
- Dual Tente® Casters for Greater Stability
- ABS Thermoformed Hood for Easy Cleaning
- Adjustable Contoured Backrest
- Front Locking System

★ See Chart for Specifications

**Models:** HSS500-WD, HSS500-W, HSS500-S  
water drop, wedge, saddle (listed in order of appearance)

 **HSS500 Product Info**

**gf**  
Assembled  
in the USA



Adjustable Contoured Backrest

360° Rotating Urethane Arm Rest  
for Comfortable Arm Positioning



Dual-density Foam Seat  
with **DURA-GEL®** Insert  
for Enhanced Comfort

180° Arm Rest Support for more  
Stable Arm Positioning

Adjustable Height Range  
21 - 28 inches (53 - 71 cm)

ABS Thermoformed  
Hood for Easy Cleaning

**OPTIONAL ACCESSORY:**  
Riser Kit Increases Height  
Range an additional  
2 inches (5 cm)  
Item No: H081025



**FOOT-CONTROLLED HYDRAULICS**  
with Three-Spindle Base and  
Four 3 inch (8 cm) Dual Tente®  
Casters for Greater Stability

**300  
POUNDS**  
300 lb (136 kg)  
Weight Capacity<sup>1</sup>  
EVENLY DISTRIBUTED

| Models:     | HSS500-S<br>saddle seat |       | HSS500-W<br>wedge seat |       | HSS500-WD<br>water drop seat |       |
|-------------|-------------------------|-------|------------------------|-------|------------------------------|-------|
|             | inch                    | cm†   | inch                   | cm†   | inch                         | cm†   |
| Seat Width: | 18.50                   | 46.99 | 20.50                  | 52.07 | 24.50                        | 62.23 |
| Seat Depth: | 24.00                   | 60.96 | 28.25                  | 71.76 | 35.00                        | 88.90 |

**Model: HSS500-XX**

|                                      | inch  | cm†    |
|--------------------------------------|-------|--------|
| Overall Width: <sup>8</sup>          | 25.50 | 64.77  |
| Overall Depth: <sup>8</sup>          | 32.25 | 81.92  |
| Overall Height:<br>minimum           | 21.00 | 53.34  |
| Overall Height:<br>maximum           | 28.00 | 180.34 |
| Base Width: <sup>8</sup>             | 24.00 | 60.96  |
| Base Depth: <sup>8</sup>             | 28.50 | 72.39  |
| Seat Height:<br>minimum              | 21.50 | 54.61  |
| Seat Height:<br>maximum              | 28.50 | 72.39  |
| Seat Thickness:<br>dual-density foam | 3.00  | 10.16  |
| Backrest Width: <sup>8</sup>         | 14.00 | 35.56  |
| Backrest Height:<br>minimum          | 10.50 | 26.67  |
| Backrest Height:<br>maximum          | 12.50 | 31.75  |
| Armrest Width: <sup>8</sup>          | 4.75  | 12.07  |
| Armrest Length: <sup>8</sup>         | 12.00 | 30.48  |
| Armrest Height:<br>minimum           | 7.00  | 17.78  |
| Armrest Height:<br>maximum           | 15.00 | 38.10  |
| Caster Diameter:                     | 3.00  | 7.62   |

features  
Caster Type: Dual Tente®

|                                 | degrees [°] |
|---------------------------------|-------------|
| Armrest Rotation:<br>movement   | 360         |
| Armrest Support:<br>movement    | 180         |
| Backrest Tilt:<br>from vertical | 20          |

|   | lb  | kg†    |
|---|-----|--------|
| Weight Capacity: <sup>1</sup><br>EVENLY DISTRIBUTED | 300 | 136.08 |
| Shipping Weight: <sup>8</sup>                       | 74  | 33.57  |



## ESC<sup>2</sup> OPHTHALMOLOGY PLATFORM

The ESC<sup>2</sup> Ophthalmology Platform is a single-patient platform from pre-op through post-op and ideal for eye, ENT, and head and neck procedures.

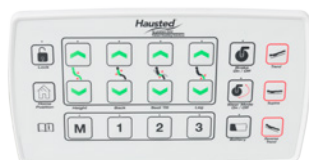
- 600 lb (272.16 kg) Weight Capacity – EVENLY DISTRIBUTED<sup>1</sup>
- Dual-density 3 inch (7.62 cm)<sup>7</sup> foam contoured sectional pads with fluid-resistant, 4-way stretch healthcare grade urethane cover for easy maintenance and comfort. Seat includes Dura-Gel<sup>®</sup> and visco (memory foam) for enhanced comfort.
- Smart Caster Technology with Auto Braking and Advanced Steering improves maneuverability
- Patented articulating headrest features infinite positioning
- Positioning at your fingertips with intuitive Hand Pendant with Pre-Sets and 3 Memory Positions
- 0° – 15° Seat Tilt improves patient comfort and safety
- Industry-Leading Height Range  
— 20 to 40 inches (51 to 102 cm) for greater procedure flexibility
- Wider Patient Surface  
— 26 inches (66 cm) for enhanced patient comfort

★ See Chart for Specifications

ESC<sup>2</sup> Product Info



| Model: ESC2EYEST                                    |             | ophthalmology   |  |
|---|-------------|-----------------|--|
|   | inch        | cm <sup>†</sup> |  |
| Overall Width:                                      | 32.00       | 81.28           |  |
| Overall Length:                                     | 83.00       | 210.82          |  |
| Overall Height:<br><i>supine</i>                    | 20.00       | 50.80           |  |
| Overall Height:<br><i>minimum</i>                   | 40.00       | 101.60          |  |
| Patient Surface:<br><i>width</i>                    | 26.00       | 66.04           |  |
| Patient Surface:<br><i>length - minimum</i>         | 75.00       | 190.50          |  |
| Patient Surface:<br><i>length - maximum</i>         | 83.00       | 210.82          |  |
| Side Rail Length:                                   | 18.50       | 46.99           |  |
| Side Rail Height:                                   | 10.25       | 26.04           |  |
| Sectional Pad: <sup>7</sup><br><i>thickness</i>     | 3.00        | 7.62            |  |
| Caster Diameter:                                    | 5.00        | 12.70           |  |
| Caster Type:  | features    |                 |  |
|   | Tente®      |                 |  |
| Seat Tilt:  | degrees [°] |                 |  |
|   | 0 - 15      |                 |  |
| Backrest Movement:                                  | 0 - 85      |                 |  |
| Trendelenburg:<br><i>standard</i>                   | 15          |                 |  |
| Trendelenburg:<br><i>reverse</i>                    | 6           |                 |  |
| Volts (V)   | power       |                 |  |
|   | 100 - 240   |                 |  |
| Hertz (Hz)  | ~50/60      |                 |  |
| Weight Capacity: <sup>1</sup><br>EVENLY DISTRIBUTED | lb          | kg <sup>‡</sup> |  |
|   | 600         | 272.16          |  |
| Shipping Weight: <sup>8</sup>                       | 315         | 142.88          |  |





## APC HYDRAULIC ALL PURPOSE CHAIR

The All Purpose Chair can be used in the Emergency Department, Triage, Surgery Centers, Physician's Offices, GI Labs, Dialysis Clinics, Step-Down Units and other departments. Its versatile design allows streamlined handling through treatment, transport and recovery.

- 325 lb (147.42 kg) Weight Capacity – EVENLY DISTRIBUTED<sup>1</sup>
- High density 3 inch (7.62 cm)<sup>7</sup> contoured sectional pads with Fluid-Resistant 4-way, stretch healthcare grade urethane cover enhances comfort.
- Dual Side Foot Controls for easy height adjustment and Trendelenburg positioning
- Emergency Release for immediate Trendelenburg positioning
- Four-Wheel Brake and Steer System operable from both sides
- Swing-down, self-storing side rails with padded armrests help keep patient secure during transport
- 5 inch (13 cm) Easy Roll casters for enhanced maneuverability

★ See Chart for Specifications

 APC Product Info





## EPC POWERED PROCEDURE CHAIR

The Powered Procedure Chair is a single patient platform which increases productivity and throughput and decreases turnover time. Its versatile design allows reduced staff time and helps prevent staff injury when transferring patients during various phases of care.

- 600 lb (272.16 kg) Weight Capacity — EVENLY DISTRIBUTED<sup>1</sup>
- Dual-density 3 inch (7.62 cm)<sup>7</sup> foam contoured sectional pads with fluid-resistant, 4-way stretch healthcare grade urethane cover for easy maintenance and comfort. Seat includes Dura-Gel® and visco (memory foam) for enhanced comfort.
- Full Radiolucent Back, shown at below right, allows for Multiple Imaging Procedures
- 6° Reverse Trendelenburg to improve surgical exposure
- Smart Caster Technology with Auto Braking and Advanced Steering for improved patient and staff safety
- Industry-Leading Height Range — 20 to 40 inches (51 to 102 cm) for greater procedure flexibility
- Wider Patient Surface — 26 inches (66 cm) — enhances patient comfort
- Positioning at your fingertips with intuitive Hand Pendant with Pre-Sets and 3 Memory Positions

★ See Chart for Specifications

 EPC Product Info

| Models:                                  | APC250ST<br>hydraulic |        | EPC500ST<br>electric |        |
|--|-----------------------|--------|----------------------|--------|
|  | inch                  | cm†    | inch                 | cm†    |
| Overall Width:                           | 27.75                 | 70.49  | 32.00                | 81.28  |
| Overall Length:                          | 75.00                 | 190.50 | 83.00                | 210.82 |
| Overall Height:<br>supine                | 23.50                 | 59.69  | 20.00                | 50.80  |
| Overall Height:<br>minimum               | 31.50                 | 80.01  | 40.00                | 101.60 |
| Overall Height:<br>maximum               | 22.00                 | 55.88  | 26.00                | 66.04  |
| Patient Surface:<br>width                | —                     | —      | 70.50                | 179.07 |
| Patient Surface:<br>length - minimum     | 70.50                 | 179.07 | 78.50                | 199.39 |
| Patient Surface:<br>length - maximum     | 29.00                 | 73.66  | 18.50                | 46.99  |
| Side Rail Length:                        | 12.00                 | 30.48  | 10.25                | 26.04  |
| Side Rail Height:                        | 3.00                  | 7.62   | 3.00                 | 7.62   |
| Sectional Pad: <sup>7</sup><br>thickness | 5.00                  | 12.70  | 5.00                 | 12.70  |
| Caster Diameter:                         |                       |        |                      |        |

|                     | features              | features              |
|---------------------|-----------------------|-----------------------|
| Operation:          | hydraulic             | dual electric         |
| Caster Type:        | Easy Roll             | Dual - Tente®         |
| Hydraulic Controls: | dual side foot pedals | dual side foot pedals |
| Radiolucent Back:   | —                     | ■                     |

|                            | degrees [°] | degrees [°] |
|----------------------------|-------------|-------------|
| Backrest Movement:         | 0 - 80      | 0 - 90      |
| Knee Flex Movement:        | 0 - 75      | —           |
| Seat Tilt:                 | —           | 0 - 15      |
| Trendelenburg:<br>standard | 10          | 15          |
| Trendelenburg:<br>reverse  | 10          | 6           |

|            | power | power     |
|------------|-------|-----------|
| Volts (V)  | —     | 110 - 240 |
| Hertz (Hz) | —     | ~ 50/Hz   |

|   | lb  | kg†    | lb  | kg†    |
|---|-----|--------|-----|--------|
| Weight Capacity: <sup>1</sup><br>EVENLY DISTRIBUTED | 325 | 147.42 | 600 | 272.16 |
| Shipping Weight: <sup>8</sup>                       | 450 | 204.12 | 375 | 170.10 |

■ Standard — Not Applicable/Available



## MBC000ST MAMMOGRAPHY / BIOPSY CHAIR

The Mammography/Biopsy Chair is designed with a shortened base for positioning in small rooms with large imaging equipment. The backrest adjusts from a full upright position of 90° to supine to provide maneuvering between the X-ray machine and wall, and a stable work surface, during mammography/biopsy procedures.

- 325 lb (147.42 kg) Weight Capacity – EVENLY DISTRIBUTED<sup>1</sup>
- High density 3 inch (7.62 cm)<sup>7</sup> contoured sectional pads with Fluid-Resistant 4-way, stretch healthcare grade urethane cover enhances comfort.
- Shortened base with Easy Roll casters and push bar for easy maneuvering
- Dual Side controls for height adjustment and Trendelenburg positioning
- Emergency Release Lever for immediate Trendelenburg positioning
- Swing-down, self-storing side rails with padded armrests help keep patient secure during procedure and transport

★ See Chart for Specifications

 **MBC** Product Info





## VIC VIDEO IMAGING CHAIR

The Video Imaging Chair is designed for Modified Barium Swallow Studies, AP/Lateral Imaging, and is a Procedural Chair for diagnosis and treatment. The shortened base is easy to maneuver in smaller rooms.

- 325 lb (147.42 kg) Weight Capacity— EVENLY DISTRIBUTED<sup>1</sup>
- High Density contoured sectional pads with Fluid-Resistant 4-way, stretch healthcare grade urethane cover enhances comfort
- Removable radiolucent back section for radiological procedures
- Easy-to-operate 90° rotating seat saves time in repositioning patient for anterior-posterior and lateral imaging
- Four Wheel Brake and Steer System
- Swing-down, self-storing side rails with padded armrests help keep patient secure during procedure and transport

★ See Chart for Specifications

 VIC Product Info



### Models:

#### MBC000ST mammography

#### VIC429ST video imaging

|   | inch  | cm <sup>†</sup> | inch  | cm <sup>†</sup> |
|---|-------|-----------------|-------|-----------------|
| Overall Width:                                  | 27.00 | 68.58           | 27.00 | 68.58           |
| Overall Length:<br><i>supine</i>                | 75.00 | 190.50          | 76.50 | 194.31          |
| Overall Height:<br><i>minimum</i>               | 23.50 | 58.93           | 23.50 | 58.93           |
| Overall Height:<br><i>maximum</i>               | 31.50 | 80.01           | 31.50 | 80.01           |
| Patient Surface:<br><i>width</i>                | 22.00 | 55.88           | 22.00 | 55.88           |
| Patient Surface:<br><i>length</i>               | 70.50 | 179.07          | 70.50 | 179.07          |
| Side Rail Length:                               | 26.74 | 67.92           | 22.00 | 55.88           |
| Side Rail Height:                               | 10.75 | 27.31           | 12.00 | 30.48           |
| Sectional Pad: <sup>7</sup><br><i>thickness</i> | 3.00  | 7.62            | 3.00  | 7.62            |
| Caster Diameter:                                | 5.00  | 12.70           | 5.00  | 12.70           |

|   |                  |                  |     |        |
|---|------------------|------------------|-----|--------|
|   | features         | features         |     |        |
| Caster Type:  | Tente®           | Easy Roll        |     |        |
| Backrest Control:                                   | pneumatic assist | pneumatic assist |     |        |
|   | degrees [°]      | degrees [°]      |     |        |
| Seat Tilt:  | 0                | 0                |     |        |
| Backrest Movement:                                  | 0 - 90           | 0 - 90           |     |        |
| Trendelenburg:<br><i>standard</i>                   | 10               | 10               |     |        |
| Trendelenburg:<br><i>reverse</i>                    | 0                | 0                |     |        |
|   | lb               | kg†              | lb  | kg†    |
| Weight Capacity: <sup>1</sup><br>EVENLY DISTRIBUTED | 325              | 147.42           | 325 | 147.42 |
| Shipping Weight: <sup>8</sup>                       | 297              | 134.72           | 295 | 133.81 |

<sup>7</sup> less where contoured — VIC back section 2 inch pad

— Not Applicable/Available



| Item                     | Description                           | Size <sup>4</sup> |                 | UOM <sup>3</sup> | MBC000ST | VIC429ST | APC250ST | ESC2EYEST | EPC500ST |
|--------------------------|---------------------------------------|-------------------|-----------------|------------------|----------|----------|----------|-----------|----------|
|                          |                                       | inch              | cm <sup>†</sup> |                  |          |          |          |           |          |
| Accessory Mounting Rails |                                       |                   |                 |                  |          |          |          |           |          |
| HSA010000                | Surgical                              | 14.75             | 37.47           | each             | ■        | ■        | ■        | ■         | ■        |
| HSA080024                | Surgical, Leg                         | 5.27              | 13.39           | each             |          |          |          | ■         | ■        |
| HSA080025                | Surgical, Head                        | 8.00              | 20.32           | each             |          |          |          | ■         | ■        |
| HSA080026                | Surgical, Head                        | 12.50             | 31.75           | each             |          |          |          |           | ■        |
| HSA080013-xxx            | Shoulder Rail/Extensions <sup>2</sup> | 8 x 8             | 20 x 20         | pair             |          |          |          | ■         | ■        |
| Armboards                |                                       |                   |                 |                  |          |          |          |           |          |
| H065990                  | Seated without Pad                    |                   |                 | each             | ■        | ■        | ■        | ■         | ■        |
| H06599000-xxx            | Seated Assembly with Pad              | 26 x 6            | 66 x 15.2       | each             | ■        | ■        | ■        | ■         | ■        |
| HSA041300-xxx            | with Pad and Clamp                    | 2                 | 5.08            |                  |          |          |          | ■         | ■        |
| H06123900-xxx            | with Pad for Recliner                 |                   |                 |                  |          |          | ■        |           |          |
| HSA080029-xxx            | Ortho Hand Surgery Board              |                   |                 |                  |          |          |          | ■         | ■        |
| Foot Extension           |                                       |                   |                 |                  |          |          |          |           |          |
| H080015-xxx              | Chair <sup>2</sup>                    |                   |                 |                  | ■        | ■        | ■        |           |          |
| Foot Control             |                                       |                   |                 |                  |          |          |          |           |          |
| HSA080014                | Electric Hi/Low                       | 12x14x4           | 30.5x35.5x10    | each             |          |          |          | ■         | ■        |
| Contoured Headrests      |                                       |                   |                 |                  |          |          |          |           |          |
| H0103ESC2-xxx            | Set of 3 Sizes below <sup>2</sup>     |                   |                 | set of 3         |          |          |          | ■         |          |
| H080988-xxx              | Individual - small <sup>2</sup>       | 4                 | 10              | each             |          |          |          | ■         |          |
| H080989-xxx              | Individual - medium <sup>2</sup>      | 4.5               | 11              | each             |          |          |          | ■         |          |
| H080990-xxx              | Individual - large <sup>2</sup>       | 5                 | 13              | each             |          |          |          | ■         |          |
| Hand Boards              |                                       |                   |                 |                  |          |          |          |           |          |
| HSA080029-xxx            | Hand Surgery Board<br>-Orthopedic     |                   |                 | each             |          |          |          | ■         | ■        |



**Accessory Mounting Rail**  
Mounts armboards or accessories for ease of use and optimum patient positioning

Item No: HSA010000



**Accessory Head Mounting Rail**  
Mounts accessories for ease of use and optimum patient positioning

Item No: HSA080026



**Armboard**  
Mounts to surgical accessory rail for greater flexibility in patient positioning

Item No: H06599000

| Item                          | Description   | Size <sup>4</sup> |                 | UOM <sup>3</sup> | MBC000ST | VIC429ST | APC250ST | ESC2EYEST | EPC500ST |
|-------------------------------|---|-------------------|-----------------|------------------|----------|----------|----------|-----------|----------|
|                               |   | inch              | cm <sup>†</sup> |                  |          |          |          |           |          |
| Heel Stirrups                 |   |                   |                 |                  |          |          |          |           |          |
| HAPC02600                     | with Mounting Adapters  |                   |                 | pair             |          |          | ■        |           |          |
| H061401                       | Adapter Patient Right   |                   |                 | each             |          |          | ■        |           |          |
| H061402                       | Adapter Patient Left  |                   |                 | each             |          |          | ■        |           |          |
| Holders                       |   |                   |                 |                  |          |          |          |           |          |
| H13008001                     | Paper Roll  |                   |                 | each             | ■        | ■        | ■        |           |          |
| HAPC14D00                     | Oxygen Tank   | 21.00             | 53.34           | each             | ■        | ■        | ■        |           |          |
| HSA080020                     | Foot End Push Handles   | 7.6 x 7.9         | 19.3 x 20.1     | pair             |          |          |          | ■         | ■        |
| IV Poles                      |   |                   |                 |                  |          |          |          |           |          |
| H000E1700                     | Fixed Height, Removable   | 42                | 107             | each             | ■        | ■        | ■        | ■         | ■        |
| H000018                       | Telescoping   | 27 - 54           | 68 - 137        | each             | ■        | ■        | ■        | ■         | ■        |
| HSA080018                     | Pendant Holder  |                   |                 | each             | ■        | ■        | ■        | ■         | ■        |
| H080770                       | Monitor   | 46.25             | 117.48          | each             | ■        | ■        | ■        | ■         | ■        |
| Oxyflex II                    |   |                   |                 |                  |          |          |          |           |          |
| HSA007900                     | Delivery System Kit — Flexible Support Structure, Adapter, & Tuck Plate |                   |                 | each             | ■        |          | ■        |           |          |
| HSA008000                     | Disposable Diffusion Trays  |                   |                 | 25/cs            | ■        | ■        | ■        | ■         | ■        |
| HSA080003                     | Delivery System   |                   |                 | each             | ■        | ■        | ■        | ■         | ■        |
| Positioners                   |   |                   |                 |                  |          |          |          |           |          |
| HSA063600                     | Pediatric - small   | 36 x 7            | 91 x 18         | each             |          | ■        |          |           |          |
| HSA063700                     | Pediatric - medium  | 48 x 10           | 122 x 25        | each             |          | ■        |          |           |          |
| HSA063800                     | Pediatric - large   | 60 x 13           | 152 x 33        | each             |          | ■        |          |           |          |
| Safety Straps — Hook and Loop |   |                   |                 |                  |          |          |          |           |          |
| H066951                       | Standard  | 30 x 2            | 76 x 5          | each             | ■        | ■        | ■        |           |          |
| HAPC012L                      | Extra-Long  | 96 x 2            | 244 x 5         | each             | ■        | ■        | ■        | ■         | ■        |
| HAPC01200                     | Standard (with Two Straps)  | 72 x 2            | 183 x 5         | each             | ■        | ■        | ■        |           |          |
| HSA071600                     | Extra-Wide  | 55 x 6            | 140 x 15        | each             | ■        | ■        | ■        | ■         | ■        |
| HSA0716L                      | Extra-Long  | 80 x 2            | 203 x 5         | each             |          | ■        | ■        |           |          |
| HSA080015                     | Buckle and Clip (non-Hook & Loop)                                       | 50 x 2            | 127 x 5         | each             |          |          |          | ■         | ■        |
| Tables                        |   |                   |                 |                  |          |          |          |           |          |
| HSA080019                     | Folding Side  | 7.3 x 17.4        | 18.54 x 44.2    | each             |          |          |          | ■         | ■        |
| Trays                         |   |                   |                 |                  |          |          |          |           |          |
| HAPC02100                     | Overlap with Storage Rack   |                   |                 | each             |          |          | ■        |           |          |
| H06124000                     | Utility   |                   |                 | each             | ■        | ■        |          |           |          |
| H080268                       | Side Utility (Stainless Steel)  |                   |                 | each             | ■        | ■        | ■        | ■         | ■        |
| Wrist Rests                   |   |                   |                 |                  |          |          |          |           |          |
| HSA078500                     | Dual Lateral Wrist  |                   |                 | pair             |          |          |          | ■         |          |
| HSA078600                     | Full "U" Wrist  |                   |                 | each             |          |          |          | ■         |          |
| HSP100400                     | Full "U" Wrist - large  |                   |                 | each             |          |          |          | ■         |          |



**Foot Extension**  
Provides extra leg length 14 inch (35.6cm) to foot end

Item No: H080015-xxx<sup>2</sup>

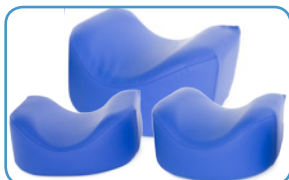




## Foot Control

Allows easy height adjustments

Item No: HSA080014



## Headrest Kit (3pc):

Includes 3 headrests <sup>2</sup>  
(large, medium, and small)

Item No: H0103ESC2-xxx <sup>2</sup>

set includes:  
H080988-xxx <sup>2</sup>  
H080989-xxx <sup>2</sup>  
H080990-xxx <sup>2</sup>



## Heel Stirrups

Attachable stirrups allow greater exam flexibility

Item No: HAPC02600



## Oxygen Tank Holder

Safely stores O2 tanks out of the procedure field

Item No: HAPC14D00



## Paper Roll Holder

Accommodates standard exam paper rolls to protect chair

Item No: H13008001



## Foot End Push Handles

Ergonomic Push Handles for Increased Staff Safety

Item No: HSA080020



## IV Poles

Convenient, Removable Poles To Hold IV Solutions/Fluids

Item No: H000018



## IV Pendant Holder

Allows For Alternative Pendant Storage When Needed

Item No: HSA080018



## OxyFlex II <sup>6</sup>

Allows a smooth and even flow of oxygen to the surgical area

Item No: HSA007900 <sup>6</sup>



## Pediatric Positioner

Offers flexibility to utilize chair for adult and pediatric procedures

Item No: HSA063600 (small)  
Item No: HSA063700 (medium)  
Item No: HSA063800 (large)



## Shoulder Rail Extensions

Provides Patient Support and Comfort

Item No: HSA080013-xxx <sup>2</sup>



## Safety Straps

Multiple size, replacement style options to enhance patient safety

Item No: H066951



## Side Tables

Enhance patient convenience with space for personal belongings or supplies

Item No: HSA080019



## Universal Tray

Enhance patient convenience with space for personal belongings or supplies

Item No: H06124000



## Wrist Rests

Full "U" (right) for greater surgeon control and positioning during eye/ENT procedures.

Dual Arm (left) allows independent positioning for enhanced surgeon comfort

(left) Item No: HSA078500  
(right) Item No: HSA078600

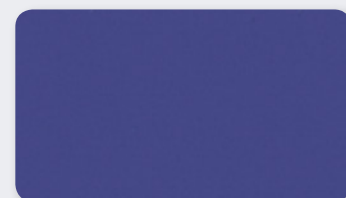


**S**urgical Chairs come standard with a 4-way stretch blue fabric.

Hausted offers a variety of upholstery color upgrades for its line of surgical chairs to meet the requests of Interior Designers and Facility Managers and their increasing role in the selection of the look, fit, and finish of procedural chairs used in facilities.

All these fabrics are designed for the demands of a healthcare environment.

## STANDARD CHAIR STRETCH FABRIC



049 **BLUE**

## PRIMASTRETCH

Primastretch is engineered with high tensile strength for durability. The 4-way stretch Urethane coated nylon cover is breathable, reduces friction, and skin shear while helping to keep the patient cool and comfortable.

| Chair Model No: | 051<br>NAVY         | 049<br>BLUE     | 050<br>BLACK    | 037<br>BLACK         | 043<br>SPRUCE   |
|-----------------|---------------------|-----------------|-----------------|----------------------|-----------------|
|                 | PRIMASTRETCH FABRIC |                 |                 | SURE-CHEK FUSION III |                 |
| ESC2EYEST       | H080901-051         | H080901-049     | H080901-050     | H080901-037          | H080901-043     |
| APC250ST        | HP150830384-051     | HP150830384-049 | HP150830384-050 | HP150830384-037      | HP150830384-043 |
| EPC500ST        | H081185-051         | H081185-049     | H081185-050     | H081185-037          | H081185-043     |
| MBC000ST        | H080245-051         | H080245-049     | H080245-050     | H134604-037          | H134604-043     |
| VIC429ST        | H134602-051         | H134602-049     | H134602-050     | H134602-037          | H134602-043     |

■ Standard Fabric

■ Optional Fabric Availability

| Chair Model No: | 427<br>BLUE-RIDGE            | 8602<br>OATMEAL  | 8604<br>CONCRETE | 8567<br>DOVE     | 454<br>ROYAL BLUE | 432<br>IMPERIAL BLUE | 8584<br>TAUPE    | 8516<br>CHESTNUT | 8615<br>BERRY    |
|-----------------|------------------------------|------------------|------------------|------------------|-------------------|----------------------|------------------|------------------|------------------|
|                 | SPRADLING PATRIOT PLUS VINYL |                  |                  |                  |                   |                      |                  |                  |                  |
| ESC2EYEST       | H080901-427                  | H080901-8602     | H080901-8604     | H080901-8567     | H080901-454       | H080901-432          | H080901-8584     | H080901-8516     | H080901-8615     |
| APC250ST        | HP150830384-427              | HP150830384-8602 | HP150830384-8604 | HP150830384-8567 | HP150830384-454   | HP150830384-432      | HP150830384-8584 | HP150830384-8516 | HP150830384-8615 |
| EPC500ST        | H081185-427                  | H081185-8602     | H081185-8604     | H081185-8567     | H081185-454       | H081185-432          | H081185-8584     | H081185-8516     | H080901-8516     |
| MBC000ST        | H134604-427                  | H134604-8602     | H134604-8604     | H134604-8567     | H134604-454       | H134604-432          | H134604-8584     | H134604-8516     | H134604-8615     |
| VIC429ST        | H134602-427                  | H134602-8602     | H134602-8604     | H134602-8567     | H134602-454       | H134602-432          | H134602-8584     | H134602-8516     | H134602-8615     |

model number shown orders frame with standard fabric • ordering options: add an 'x' at the end of the model number (orders frame only), then order desired fabric as a separate item

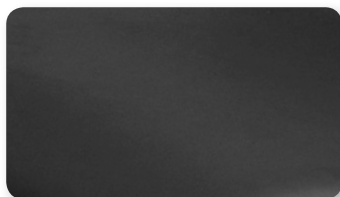




## OPTIONAL CHAIR VINYLs AND STRETCH FABRICS



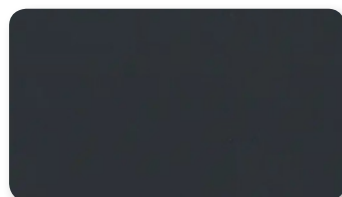
051 NAVY



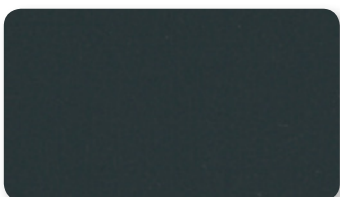
050 BLACK

### PRIMASTRETCH

Primastretch is engineered with high tensile strength for durability. The 4-way stretch urethane coated nylon cover is breathable, reduces friction, and skin shear while helping to keep the patient cool and comfortable.



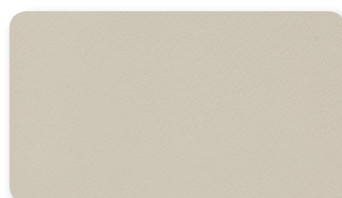
037 BLACK



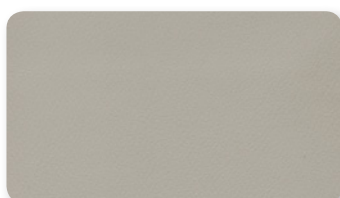
043 SPRUCE

### STRETCH URETHANE SURE-CHEK® FUSION III

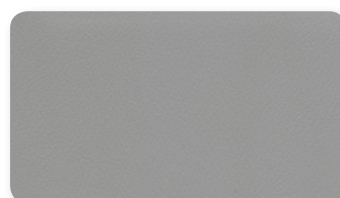
The Sure-Chek Fusion III is engineered for maximum performance. The 4-way stretch fluid-resistant urethane cover reduces friction and skin shear while helping to keep the patient cool and comfortable. The fabric provides maximum resistance against spills, staining, and odors. The fabric incorporates antimicrobial additives designed to help protect the fabric against odor-forming bacterial growth to reduce undesirable organic odors.



8602 OATMEAL



8604 CONCRETE

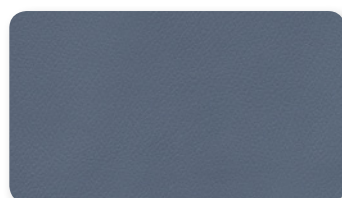


8567 DOVE

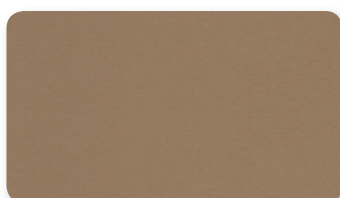
### PATRIOT PLUS POLYVINYL

NEO

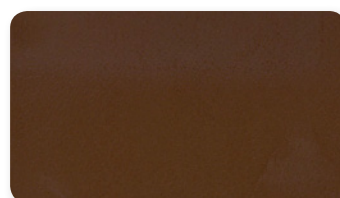
The Patriot-Plus Neo is a polyvinyl material designed with their antimicrobial protection and resistance to abrasion and stains from the demands of the healthcare environment. The fabric is easy to clean and contains anti-static properties.



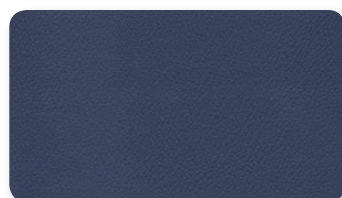
427 BLUERIDGE



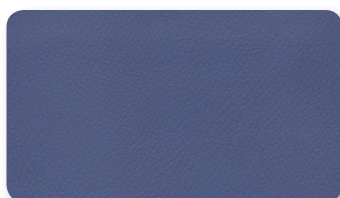
8584 TAUPE



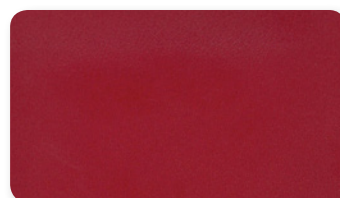
8516 CHESTNUT



432 IMPERIAL BLUE



545 ROYAL BLUE



8615 BERRY

model number shown orders frame with standard fabric

ordering options: add an 'x' at the end of the model number (orders frame only), then order desired fabric as a separate item



In addition to Patient Handling, Graham-Field is a leader in procedural and healthcare solutions designed to improve outcomes across the care continuum.

Visit [www.grahamfield.com](http://www.grahamfield.com) to discover how our medical equipment can streamline care, drive efficiency, and enhance safety for your patients and staff.

## CLINICAL SEATING

## PATIENT TRANSPORT

## EXAM ROOM

## BARIATRIC



EC REV

CE Partner4U BV  
Esdoornlaan 13  
3951 DB Maarn  
The Netherlands  
[www.cepartner4u.eu](http://www.cepartner4u.eu)

GF Health Products, Inc. is an  
ISO 13485:2016 / MDSAP Certified Company

Color variations may occur due to monitor or printer settings.

+1 770.368.4700

Information contained herein is subject to change without notice.  
The most current and complete product information can be found on our website.  
[www.hausted.com](http://www.hausted.com) | [www.grahamfield.com](http://www.grahamfield.com)



© 2016, GF Health Products, Inc. All Rights Reserved.  
Dura-Gel and Hausted are registered trademarks of GF Health Products, Inc.  
Herculte & Suno-Check are registered trademarks of Aberdeen Road Company Corporation.  
Neo, EcoSense and Spradling are trademarks of Spradling Holdings, Inc.  
Tente is a registered trademark of TENTE International GmbH.

Hausted YouTube Channel



**grahamfield**

GF1600018RevG24